

PROPERTY DESCRIPTION

Located in one of the city's most historical blocks on 119 Kent Street, The BDC place was originally opened in 1989. Then known as the Royal Trust Tower, it was part of a broader downtown Charlottetown development project in the 1970s and 1980s. The BDC Place is connected to the Queen St. parkade as well as the Confederation Court Mall via a pedway across Kent Street.

Connected to Queen Street Parkade and Confederation Court Mall

Tenants include:

- CIBC Wood Gundy
- National Bank Financial
- CMHC
- Ministers' Regional Offices
- Business Development Bank



ADDRESS MAP

Country :	Canada
Province :	Prince Edward Island
City :	Charlottetown
Street :	Kent Street
Street Number :	119
Postal Code :	C1A 1N3
No of Floors :	7
Longitude :	W64 52' 15.5"
Latitude :	N46 14' 8.7"

BDC Place Business Ctr





119 Kent Street, Charlottetown PE

FURTHER DETAILS

Large and finished office space. Tenants have access to a shared boardroom, reception and kitchen.

Offices :	various
Property Type :	Office
View :	City
Square Footage :	68-120
Floor:	5

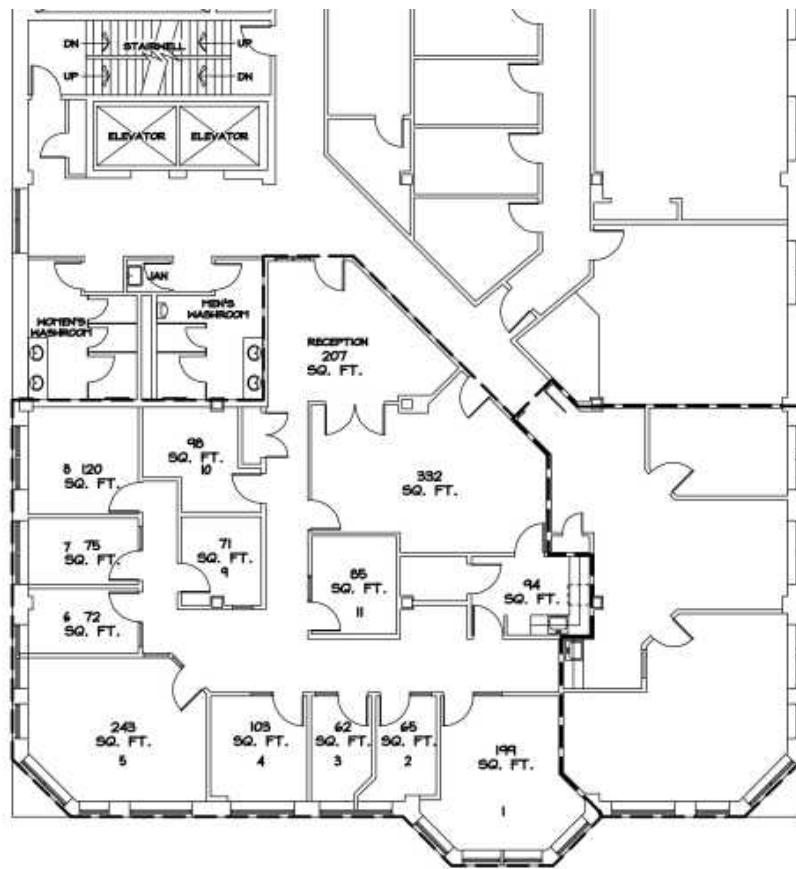
Features

 Reception Area	 Common Area
 Kitchen	 Office

FOR MORE INFORMATION OR TO BOOK A VIEWING

902-566-1153
leasing@dyneholdings.com
98 Fitzroy St, Suite 100
Charlottetown, PE C1A 1R6

DYNEHOLDINGS.COM



BDC PLACE - 5TH FLOOR

