

## PROPERTY DESCRIPTION

Located in one of the city's most historical blocks on 119 Kent Street, The BDC place was originally opened in 1989. Then known as the Royal Trust Tower, it was part of a broader downtown Charlottetown development project in the 1970s and 1980s. The BDC Place is connected to the Queen St. parkade as well as the Confederation Court Mall via a pedway across Kent Street.

Connected to Queen Street Parkade and Confederation Court Mall

Tenants include:

- CIBC Wood Gundy
- National Bank Financial
- CMHC
- Ministers' Regional Offices
- Business Development Bank



## ADDRESS MAP

|                 |                      |
|-----------------|----------------------|
| Country :       | Canada               |
| Province :      | Prince Edward Island |
| City :          | Charlottetown        |
| Street :        | Kent Street          |
| Street Number : | 119                  |
| Postal Code :   | C1A 1N3              |
| No of Floors :  | 7                    |
| Longitude :     | W64 52' 15.5"        |
| Latitude :      | N46 14' 8.7"         |

## BDC Place - Unit 330





119 Kent Street, Charlottetown PE

## FURTHER DETAILS

Large and finished office space featuring a large reception area and kitchette. Located on the same floor as CMHC and the Sunrise Group.

|                  |        |
|------------------|--------|
| Offices :        | 9      |
| Property Type :  | Office |
| View :           | City   |
| Square Footage : | 2696   |
| Floor:           | 3      |

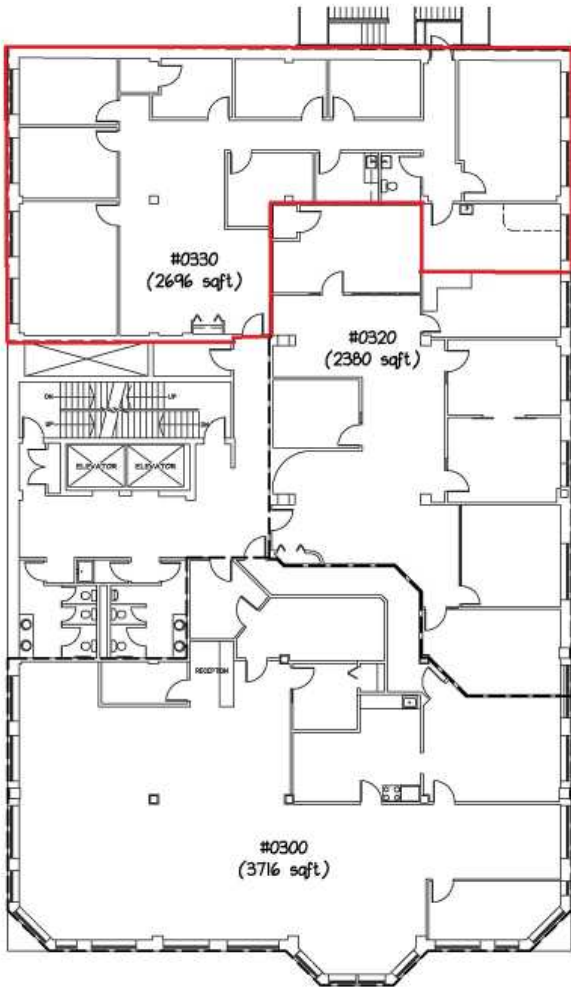
## Features

|   |   |
|---|---|
|  Reception Area |  Common Area |
|  Kitchen       |  Office      |

### FOR MORE INFORMATION OR TO BOOK A VIEWING

902-566-1153  
leasing@dyneholdings.com  
98 Fitzroy St, Suite 100  
Charlottetown, PE C1A 1R6

[DYNEHOLDINGS.COM](http://DYNEHOLDINGS.COM)



**NOTES:**

MEASUREMENT TAKEN TO OUTSIDE FACE OF EXTERIOR WALL

MEASUREMENT TAKEN TO CENTER OF SHARED WALLS

MEASUREMENT TAKEN TO OUTSIDE FACE COMMON WALLS

SCALE 1/16"=1'-0" ON 8.5"x14" SHEET

|            |               |   |            |              |                                  |  |             |      |  |
|------------|---------------|---|------------|--------------|----------------------------------|--|-------------|------|--|
| <b>BDC</b> | Project :     | <b>BDC PLACE<br/>CHARLOTTETOWN, PEI</b> | Scale      | 1/8" = 1'-0" | <b>CHANDLER<br/>ARCHITECTURE</b> |  |             |      |  |
|            | Date          | OCTOBER 2014                            | Design BY  | AJM          |                                  |  |             |      |  |
| <b>7</b>   | Sheet Title : | <b>BDC<br/>3RD FLOOR</b>                | Design No. | 2014-BDC3    | <b>DESIGN MATTERS</b>            | 52 Queen Street PO Box 180 Charlottetown<br>P.O. Box 180, Charlottetown, PEI<br>Tel: 639 698 6888<br>Fax: 639 598 8254 www.chandler.ca |             |      |  |
|            |               |   |            |              |                                  | Rev  | Description | Date |  |

